



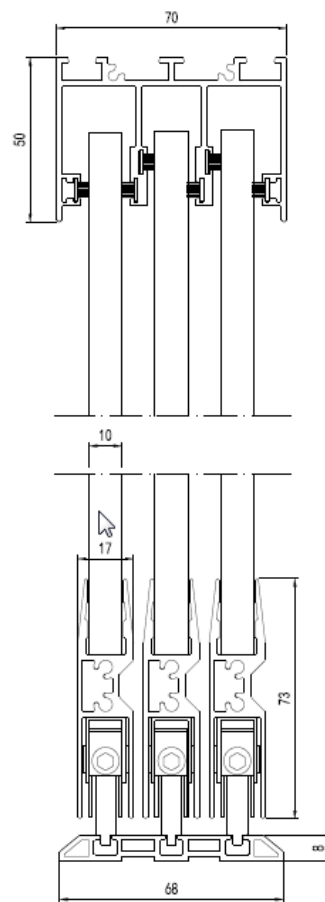
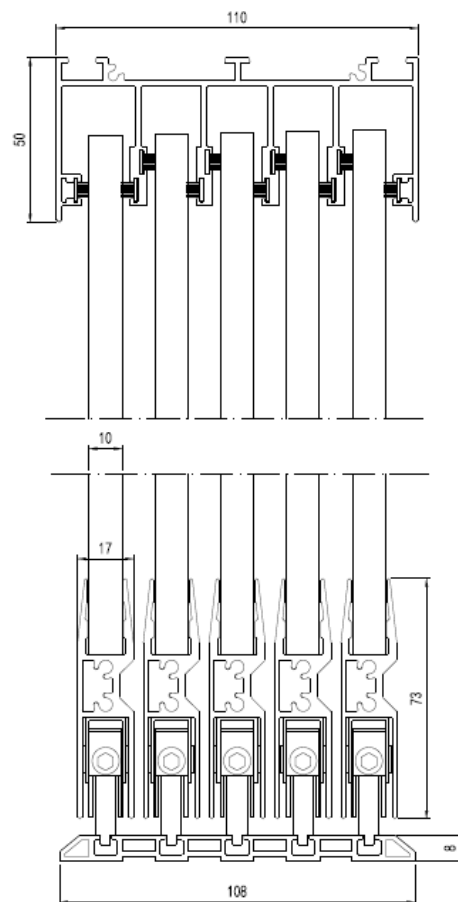
Panorama sliding panels

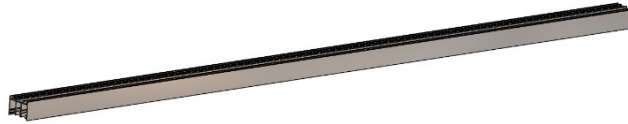
Assembly instructions

- Assembly instructions for a Low sliding rail AL22 Page 2-12

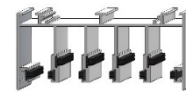
AL22

Low system

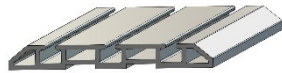




Upper rail three-lane



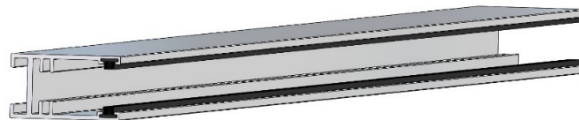
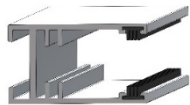
Upper rail five-lane



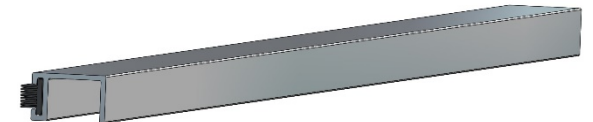
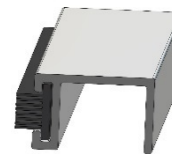
Low under rail three-lane



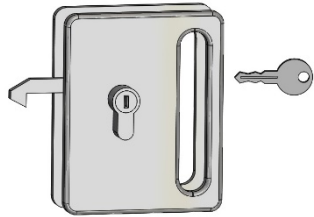
Low under rail five-lane



Side profile



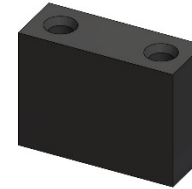
Brush profile (optional)



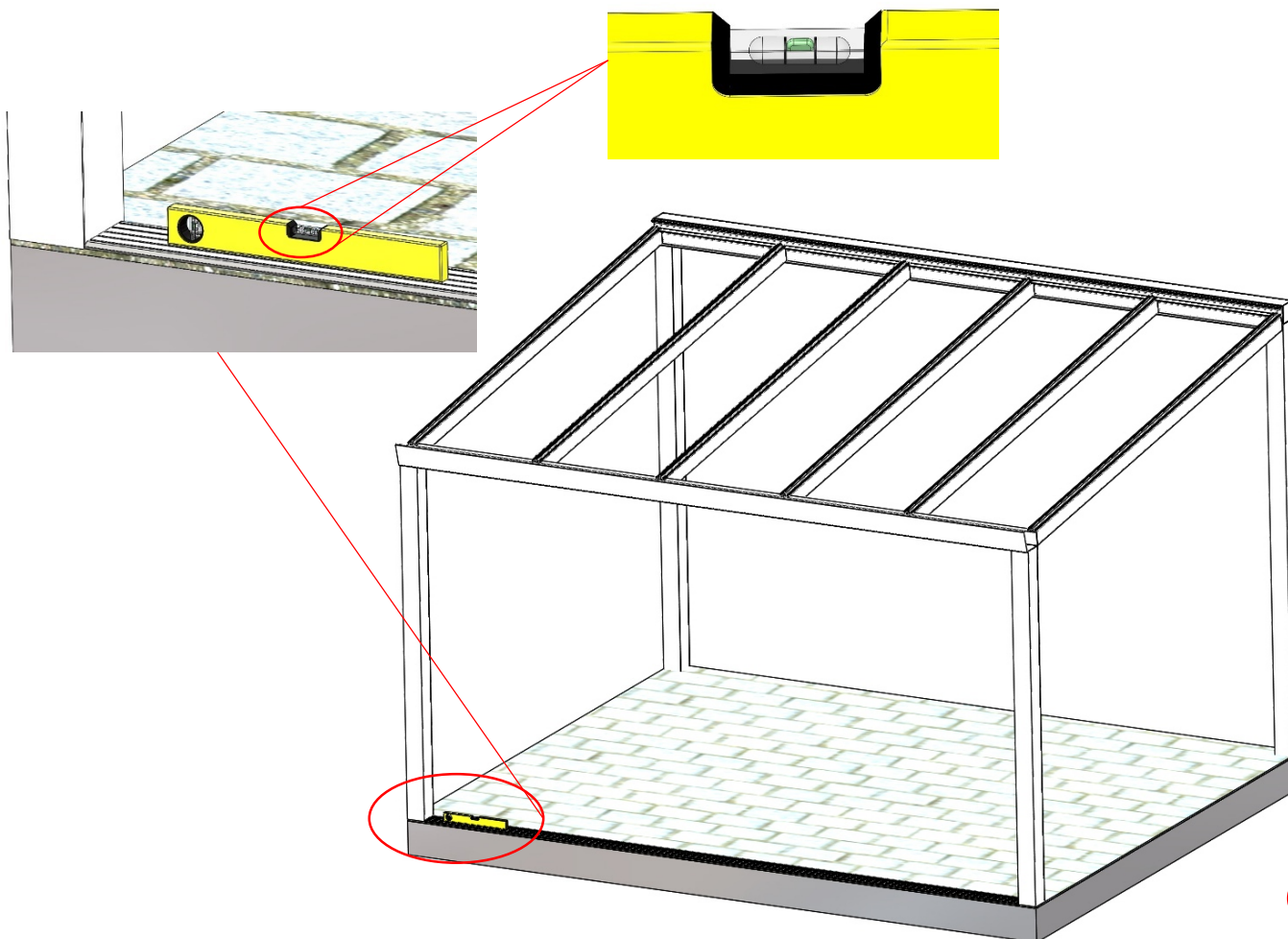
Lock stainless steel
(optional)



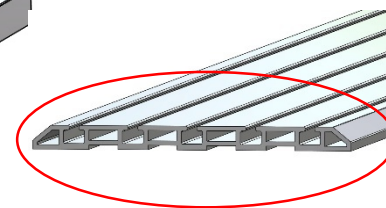
Doorknob stainless steel

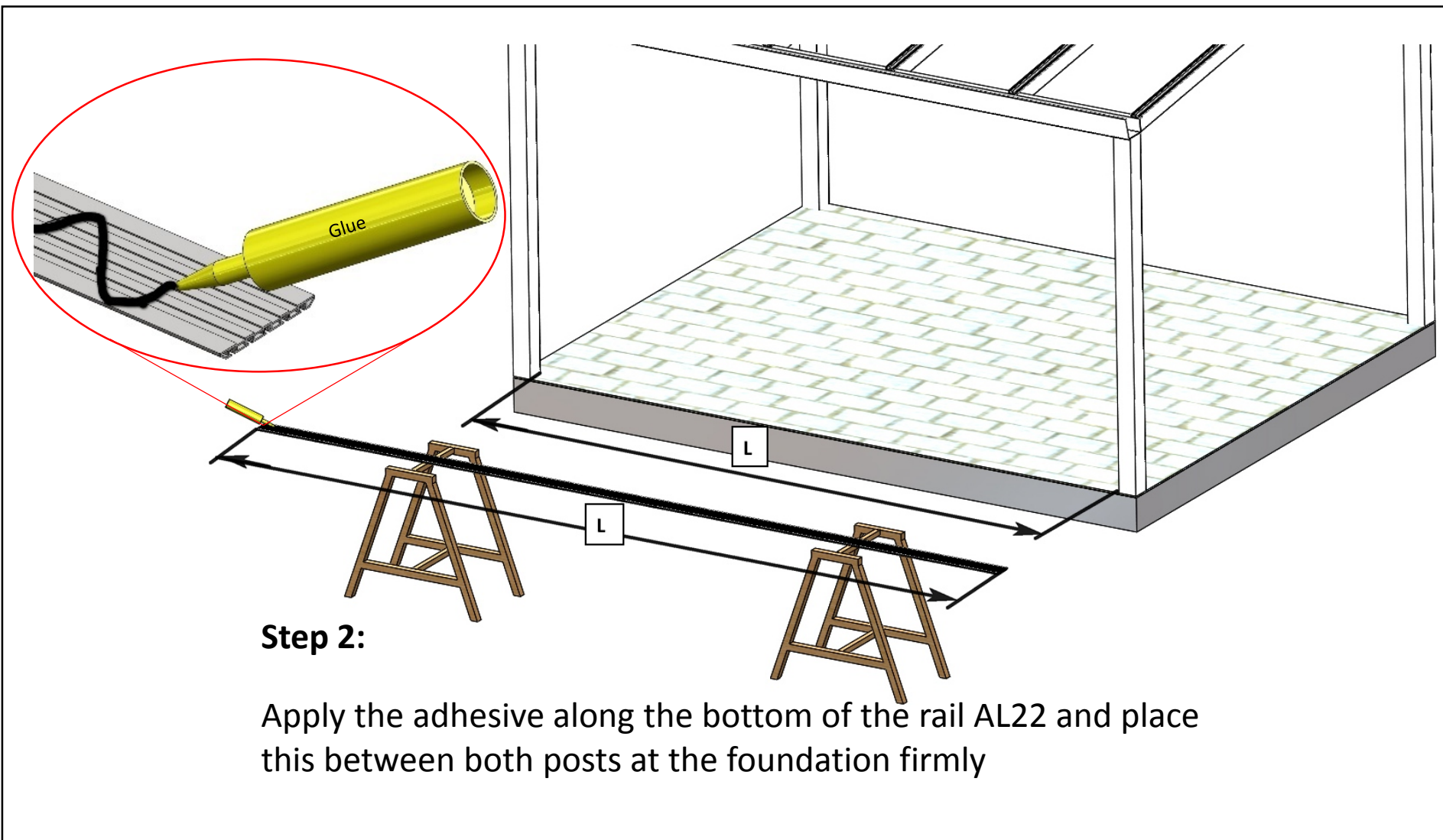


Panel stopper

**Step 1:**

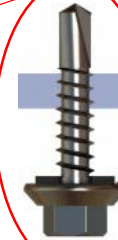
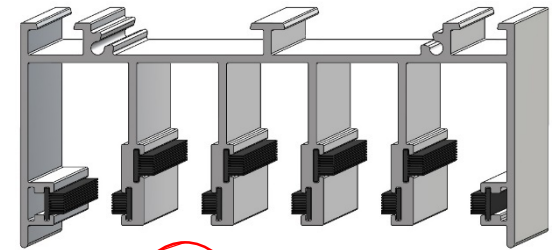
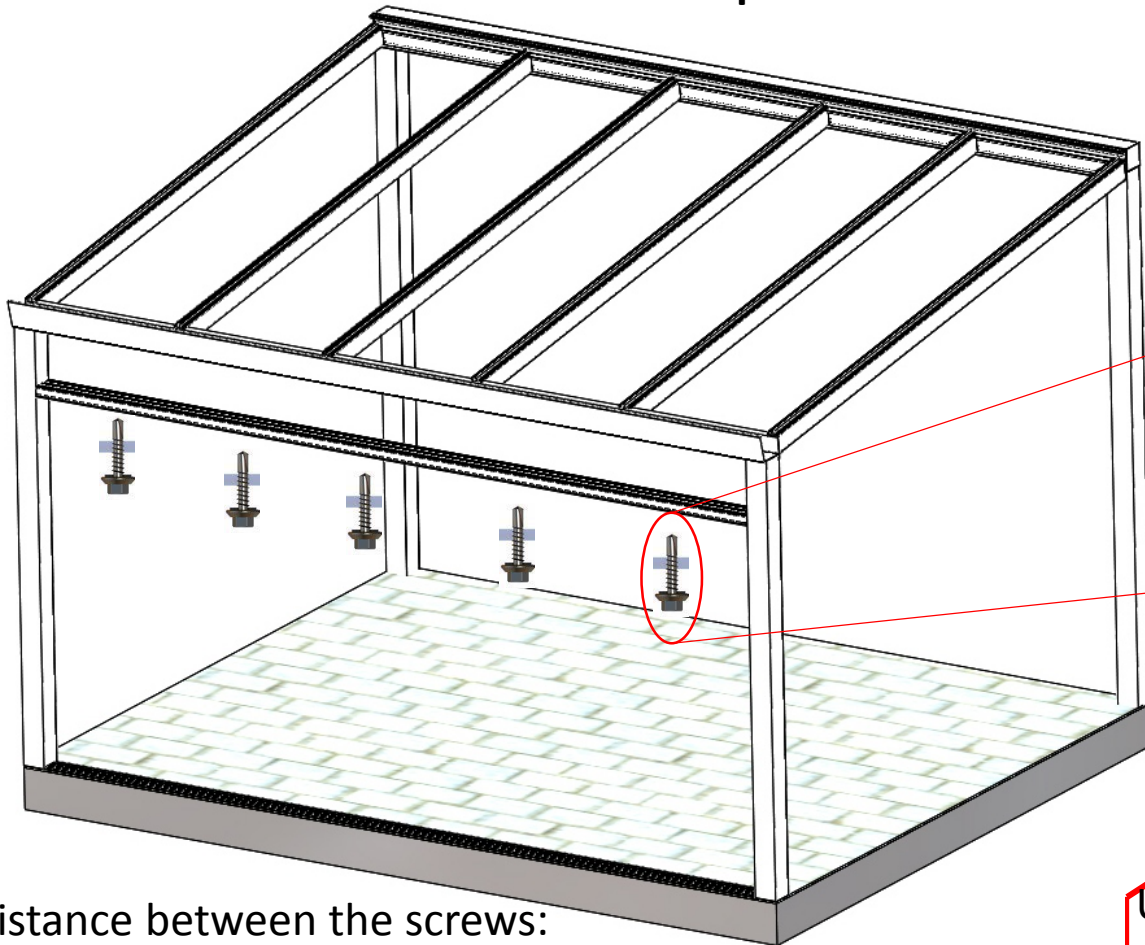
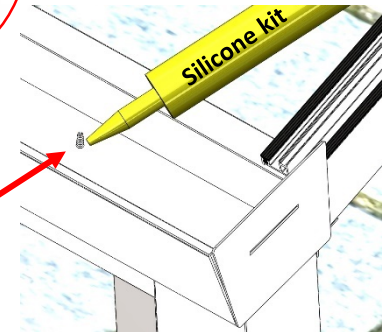
Please make sure that the foundation for the under rail is flat, equal and has sufficient firm ground so that the bottom rail with a low sill can be assembled level.

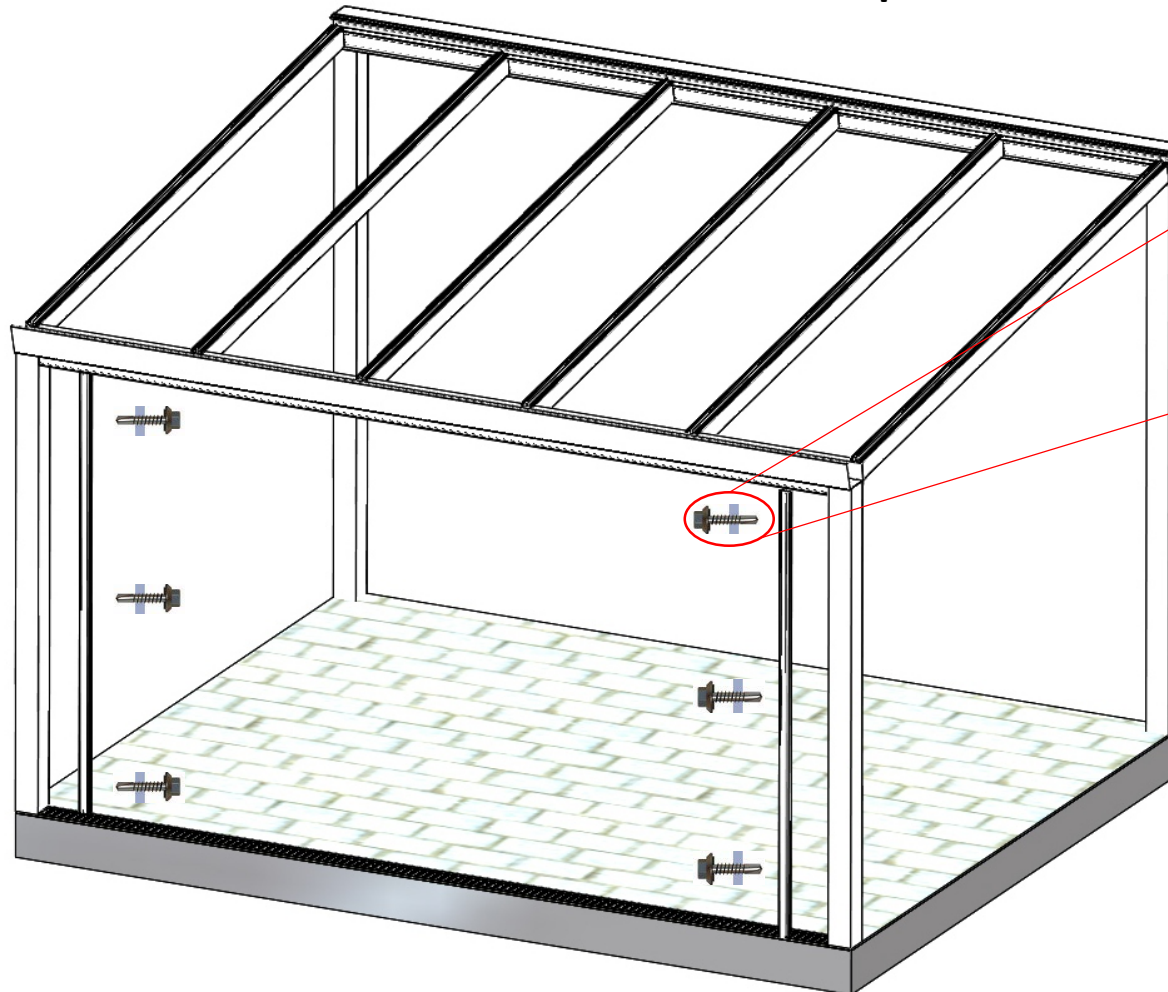




Step 3:

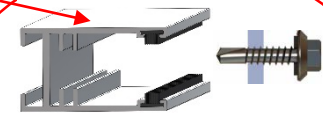
Screw the upper rail to the gutter

**Hexagon head screw**
5,5 x 25mmDistance between the screws:
approx. 1000 mmUse a silicone kit to make the screws
waterproof at the top of the gutter.

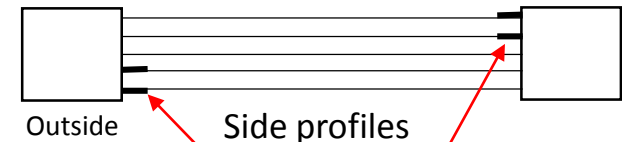
Step 4: Screw the side profiles to the posts

Hexagon head screw
5,5 x 25mm

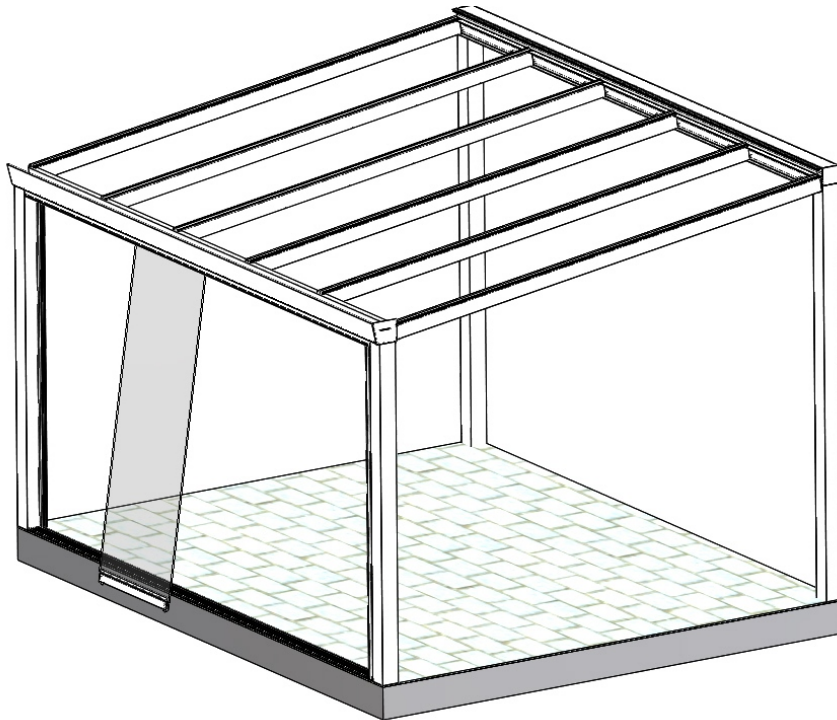
Side profile



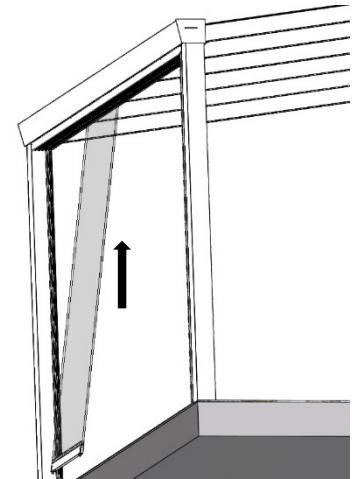
Applicable for a, from right to left
opening wall.



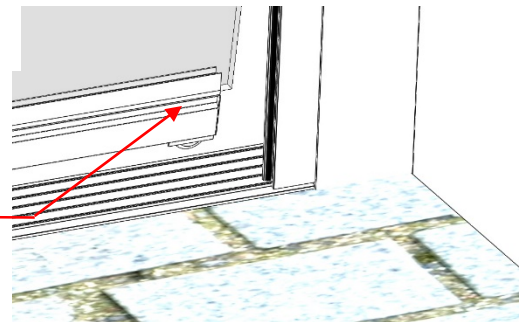
(Depending on number of profiles)

**Step 5:**

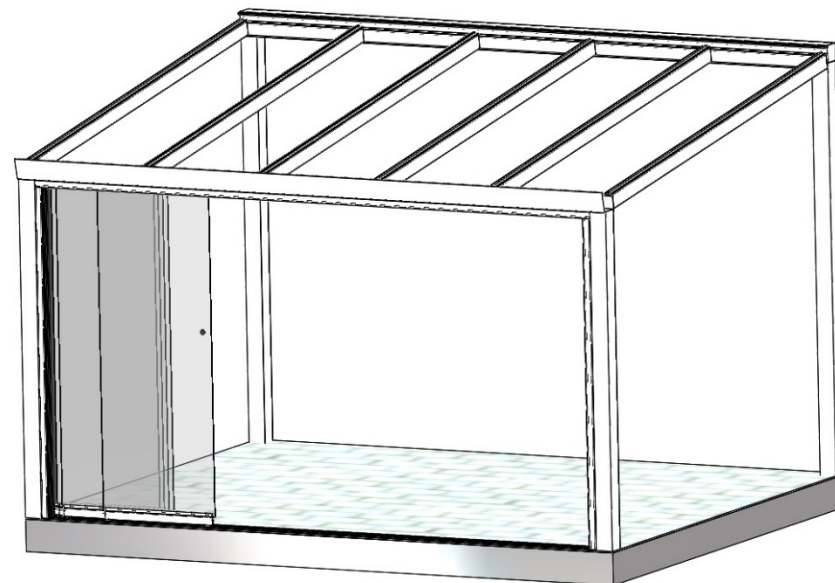
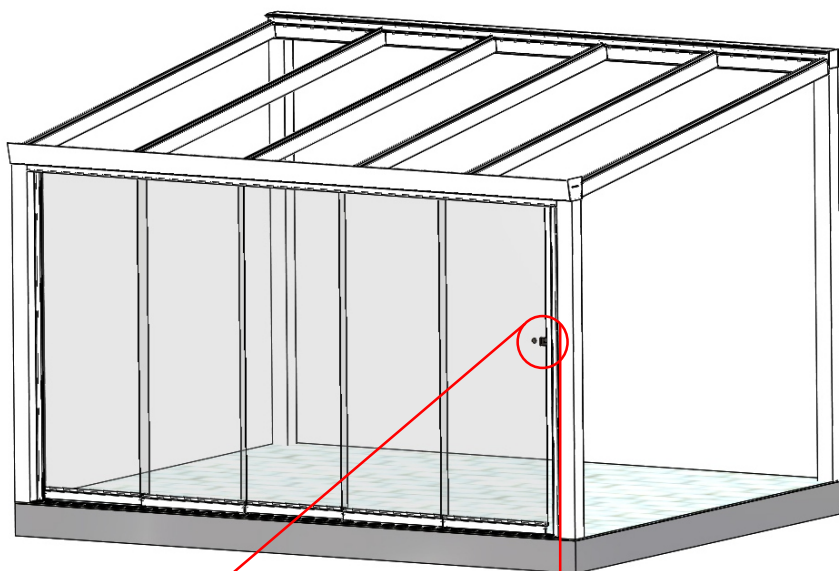
Put the panel with a groove to the inside. Install the glass (tilted) between the brushes of the upper rail and then install the trolley onto the rails



Attention!: The groove of the trolley should be on the inside.

**Attention!:**

If your sliding panels open towards the left, you have to place the panel with the doorknob in as last one.

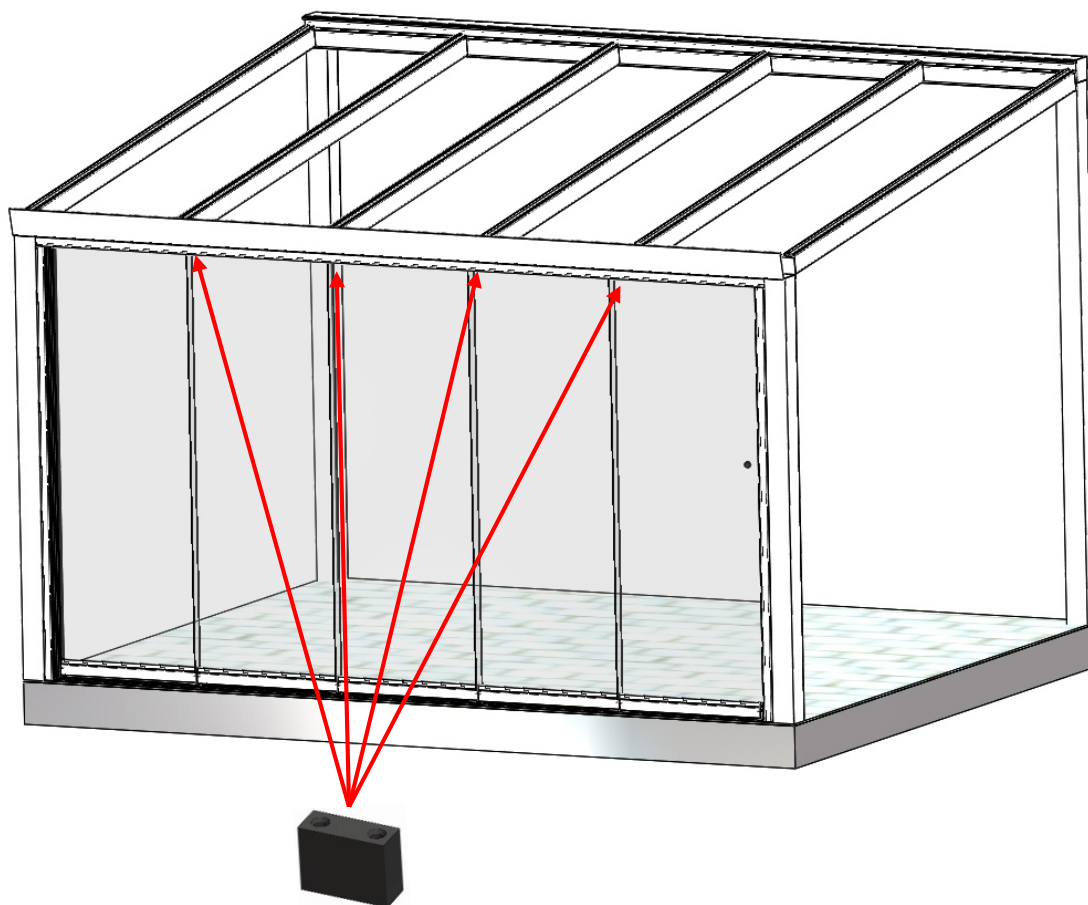


Detail: Lock assembly (optional)

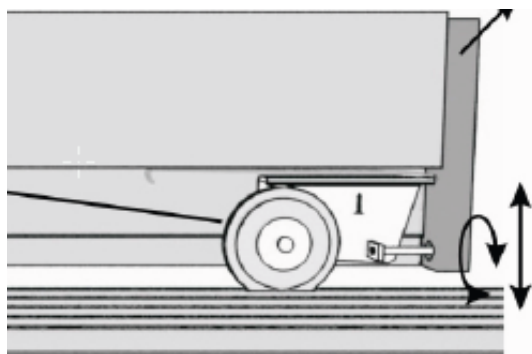
Attention!: The alan screws have to be screwed into the lock for disassembly for assembly to the glass.

Step 6:

Install the other glasses in the same way (tilted). The drawing shows the installation of panels with an opening towards the left



Step 7:
Screw the panel stopper
in the upper rail

**Step 8:**

If necessary, you can adjust the height of the panels. There is an hexagon socket screw in the head side. Raise the panel slightly and turn the screw (lower to the left/higher to the right)