

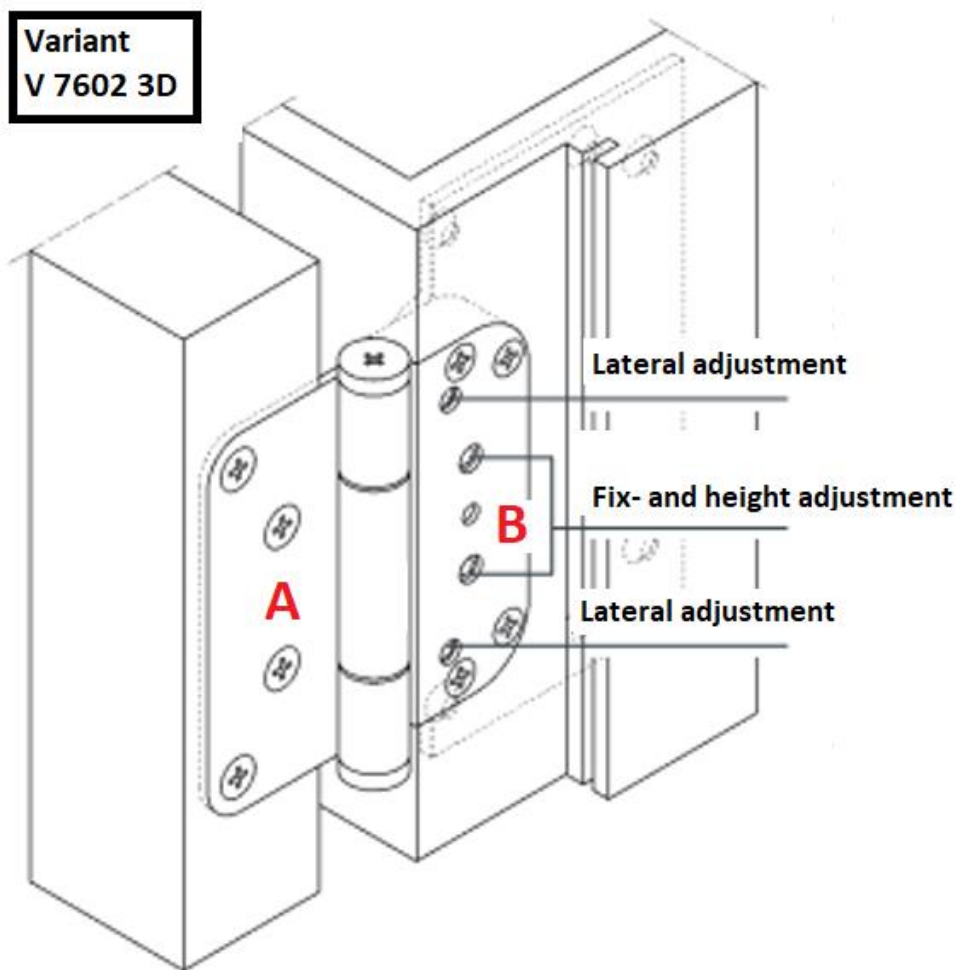
LUGARDE PANEL-SYSTEM HINGES

Hinge type : Variable hinge system

Product code: Variant V 7602 3D

Description: 3D Adjustable hinge system.

Existing of 2 parts : A and B. (see detailed drawings below)



Adjustable in 3 directions:

- Lateral: $\pm 3\text{mm}$
- Height: $\pm 2\text{mm}$
- Hinge space: $0 - 4\text{mm}$

Procedure for lateral adjustment:

- Open the door
- Adjust the Allan screws in the desired direction
- Adjust screws evenly to avoid stress in the axle.

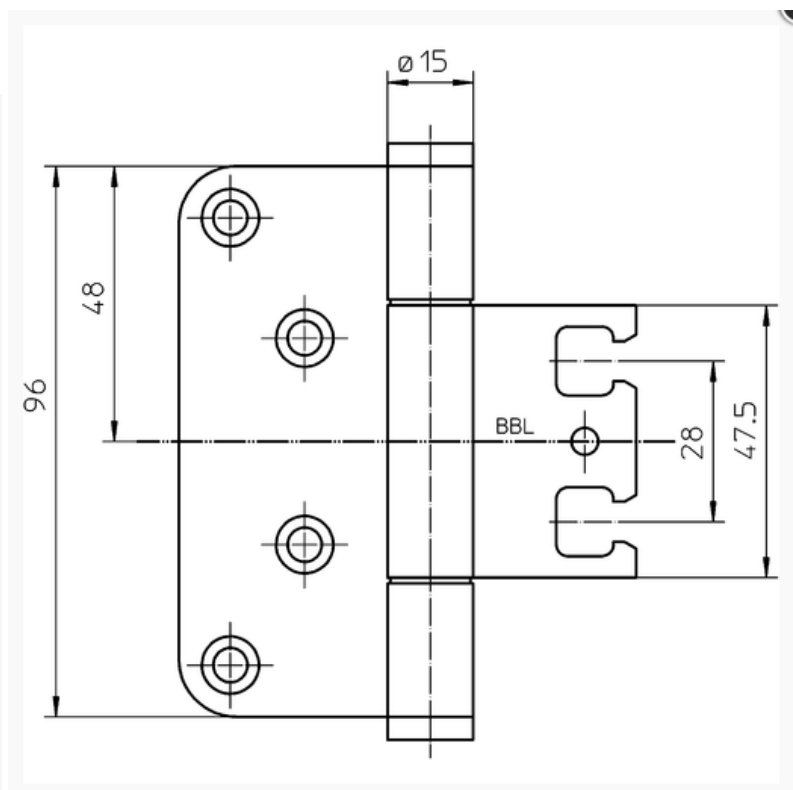
Procedure for height- and hinge space adjustment:

- Open the door
- Support the door with wedges
- loosen the 3 “fix- and height adjustment screws”
- Manoeuvre the door in the desired position
- Tighten the 3 “fix- and height adjustment screws”
- Remove the wedges

All adjustments above to be executed with a 4 mm Allan key

PART A:

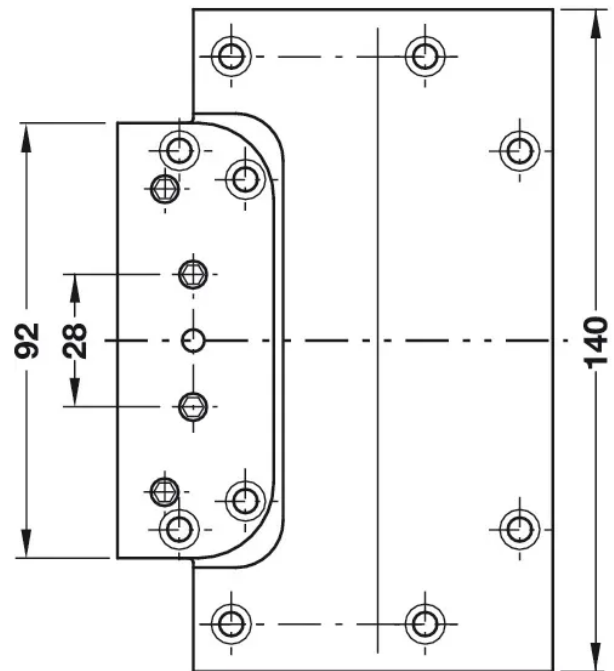
Hinge part V 7888 WF



PART B:

V 7602 3D/1

Receiver part, for unrebbated doors with casing frames.



Use these markers to adjust the hinge in horizontal- and vertical direction



See below:

